

Corneal Transplant

One Use-Plus

Automated DSAEK

DSAEK

One step further ...



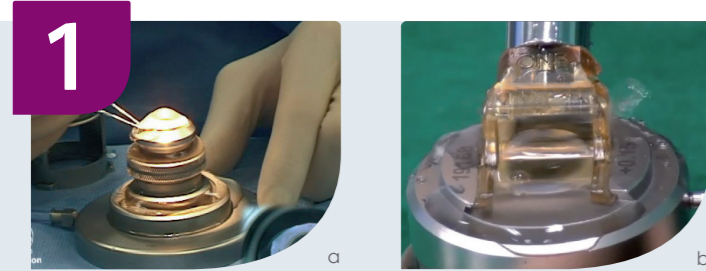
One Use
DSAEK

... in the procedure of choice
for corneal transplantation

DSAEK

Step by step example of a DSAEK procedure

Donor Cornea Preparation



Lamellar dissection



A donor cornea with a minimum of 16 mm and maximum of 19 mm scleral rim is placed onto the Moria reusable Artificial Chamber (#19161-19162) or the Single-Use Artificial Chamber (#19182).



An anterior lamellar cap is removed from the posterior portion, using a Moria microkeratome with a calibrated head (either reusable or single-use).



A "S" marker can be used to mark a "S" on the stromal side of the donor button.



Lamellar trephination



The residual posterior portion of the donor cornea is then transferred, endothelial side up:

- to the Moria Hanna Punch Block #17169.

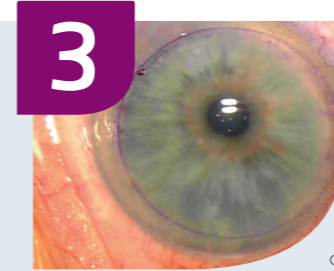
OR



- to the Moria One® Disposable Corneal Vacuum punch #17200 (several diameters available).

The designs of both punches guarantee excellent centration.

Patient Preparation

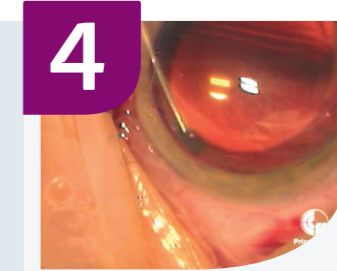


Marking



The recipient cornea is marked with a Moria Marker #19095 (3 diameters available):

- 8.00mm
- 8.50mm
- 9.00mm

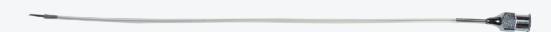


Descemet's membrane scoring



The area of planned Descemet's removal is then outlined with a Moria reusable Price Hook #19091 or the Single-Use Price Hook #17302.

The Moria chamber maintainer #19092 is inserted into anterior chamber for continuous infusion during the stripping and removal of Descemet's membrane.



Donor Lamellar Insertion "Pull-through" technique & positioning

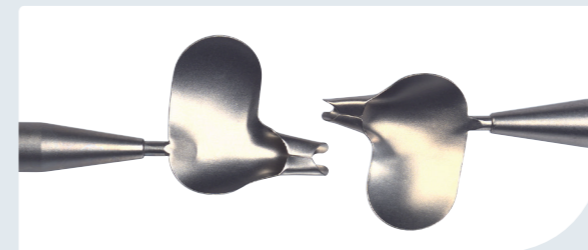
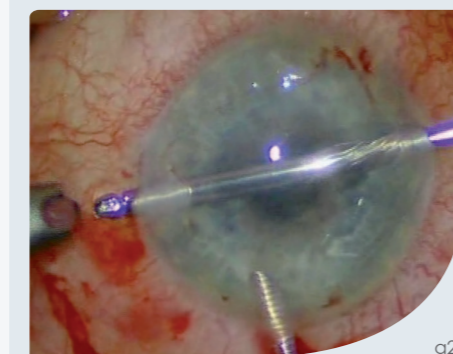


Descemet's membrane stripping



The outlined Descemet's membrane is stripped off using one of the Moria Stripper.

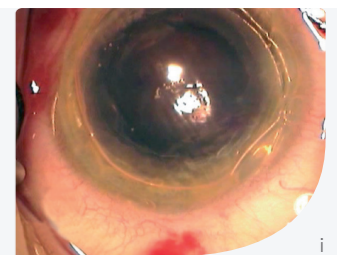
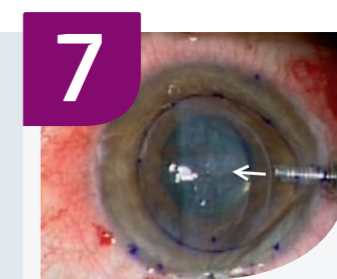
- Reusable irrigating 90° Spatula #19083/B
- Reusable non-irrigating 90° Spatula #19077/B
- Single-Use Stripper 90° angled tip #17303



The Moria reusable Busin Spatula #20006, Mini Busin Spatula #20007 or the Single-Use Busin Spatula #17300 is loaded with the donor lamella, endothelial side up.



The Busin Forceps 20G #20004 or 23G (either reusable #20011 or single-use #17301) is inserted into the spatula up to the slot to grasp the donor button. The donor lamella is then pulled into the spatula opening. Once the spatula is inverted and duly positioned, the donor lamella is pulled into the anterior chamber. It is then left to unfold spontaneously.



Donor lamellar adherence

Once the donor tissue is well centered, an air bubble is injected to press the donor tissue up against the patient's cornea.

The air is then removed at the slit lamp to avoid a pupillary block.

Moria Products For Lamellar Keratoplasty:



Schapira Speculum
#18195



Marker
#19095
8.00 mm / 8.50 mm / 9.00 mm



"S" Marker
#19096



Price Hook
#19091



One® Single-Use Price Hook
#17302



Chamber Maintainer
#19092



90° Spatula
#19077/B
(or irrigating version also available
#19083/B)



One® Single-Use 90° Stripper
#17303



Busin Spatula
#20006



Mini Busin Spatula
#20007



One® Single-Use Busin Spatula
#17300



Busin Forceps, 20G
#20004



Busin Forceps, 23G
#20011



One® Single-Use Busin Forceps, 23G
#17301



One Use Large-Cut Heads for artificial chamber
#19184/xxx



CB Single-Use Heads for artificial chamber
#19178/xxx



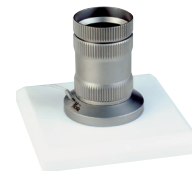
Artificial Chamber with guide ring



One® Single-Use Artificial Chamber with guide ring



One® Single-Use Corneal Vacuum Punch
#17200Dxxx



Hanna Punch Block
#17169



Infusion Tubing Set
#19181

Pictures a, e, f: courtesy of Francis W. Price, M.D. (Indianapolis, IN)
Picture d: courtesy of Mark S. Gorovoy, M.D. (Fort Myers, FL)
Pictures b, g, h: courtesy of Massimo Busin, M.D. (Forli, Italy)
Picture i: courtesy of John D. Goosey, M.D. (Houston, TX)

To obtain more information



MORIA SA
15, rue Georges Besse
92160 Antony
FRANCE
Phone: +33 (0) 1 46 74 46 74
Fax: +33 (0) 1 46 74 46 70
www.moria-surgical.com

MORIA JAPAN KK
Inami Bldg. 6F
3-24-2 Hongo Bunkyo-ku
Tokyo 113-0033
JAPAN
Phone: +81 3 5842 6761
Fax: +81 3 5842 6762
www.morijapan.com

Moria Shanghai Office
RM4, 10 FL, Kai Li Building
N°432 Huai Hai West Road
200052 Shanghai
CHINA
Phone: +86 21 5258 5068
Fax: +86 21 5258 5067
www.moria-surgical.com.cn



Non contractual document. MORIA #66060EN-F-05.2016

Moria
Leading Innovations in Ophthalmology